


Overton Park NA

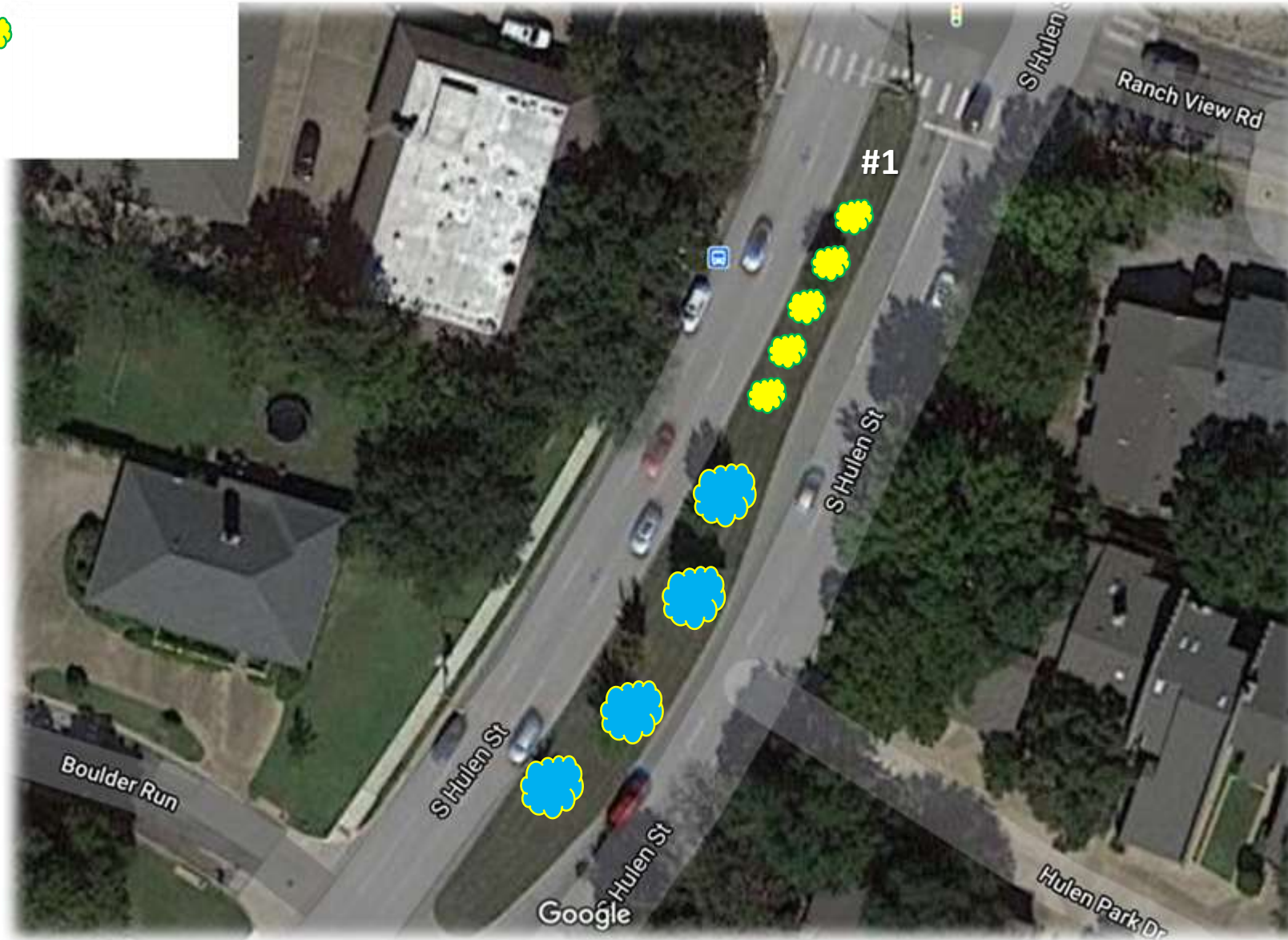
Hulen Median Refresh



10/9/2020

5 – Crepe Myrtles 

4 – Silver Oaks 



5 – Crepe Myrtles




3 – Silver Oaks

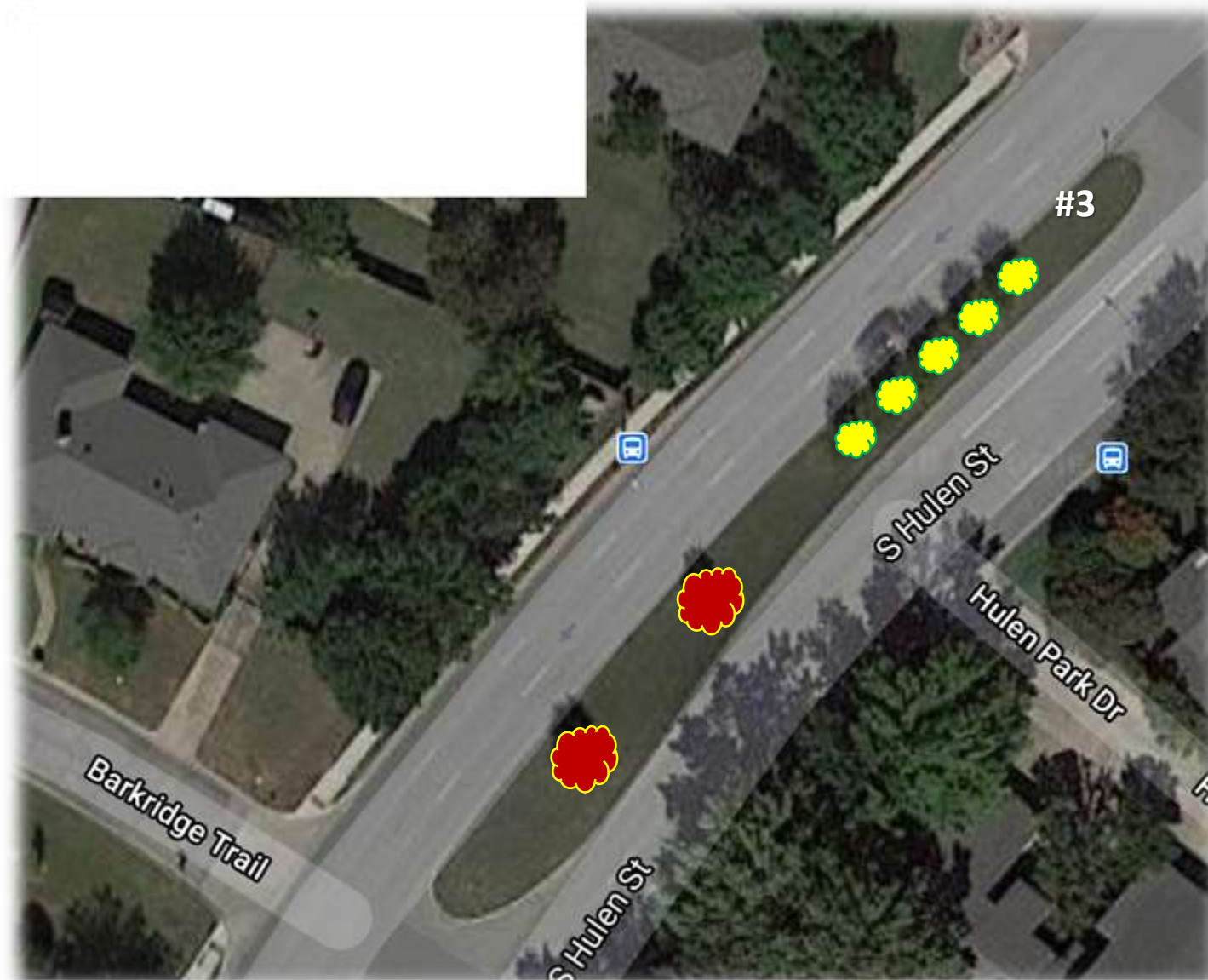



4 – Burr Oaks



5 – Crepe Myrtles 

2 – Live Oaks 



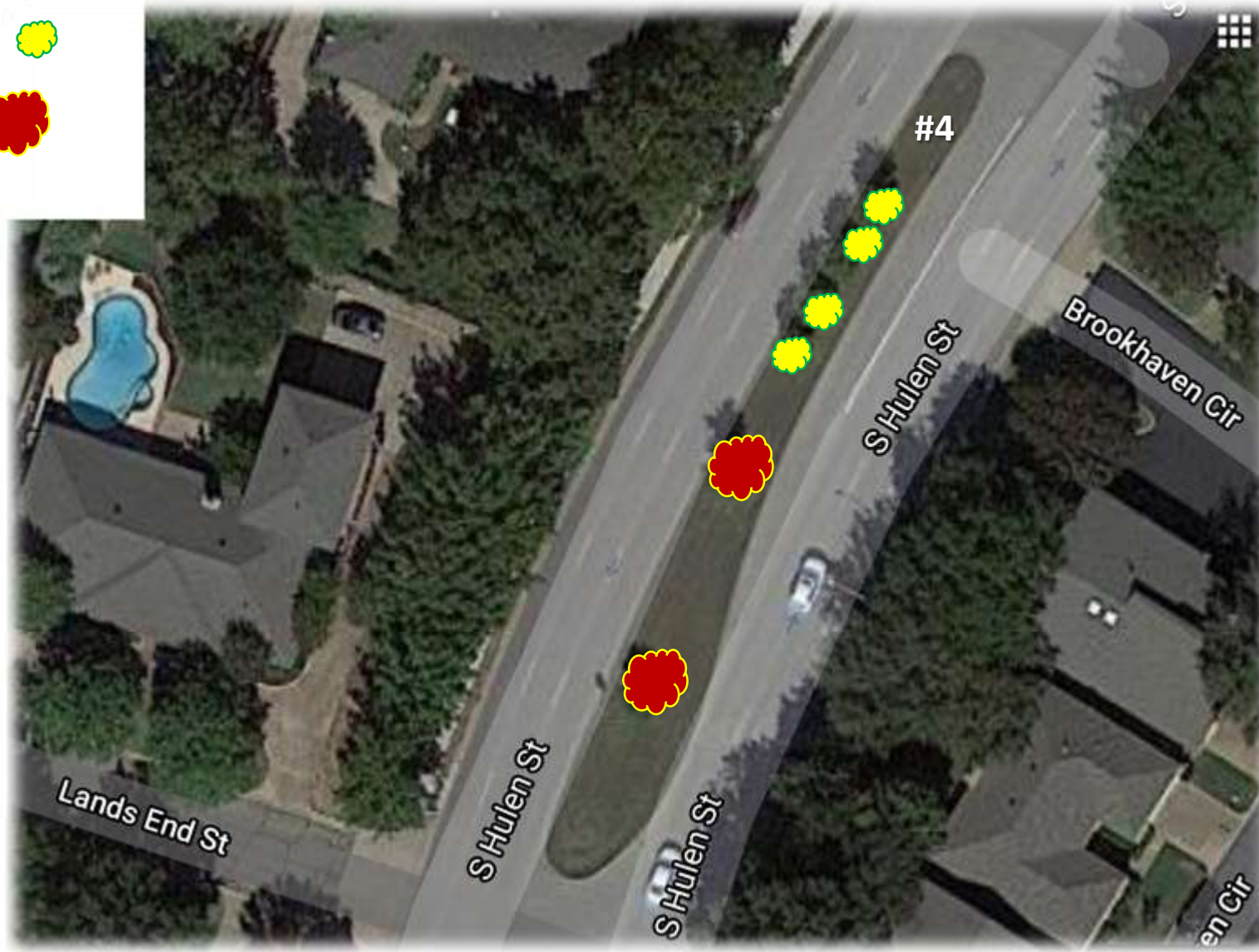
Water Main &
Meter 

Valve 



5 – Crepe Myrtles 

2 – Live Oaks 

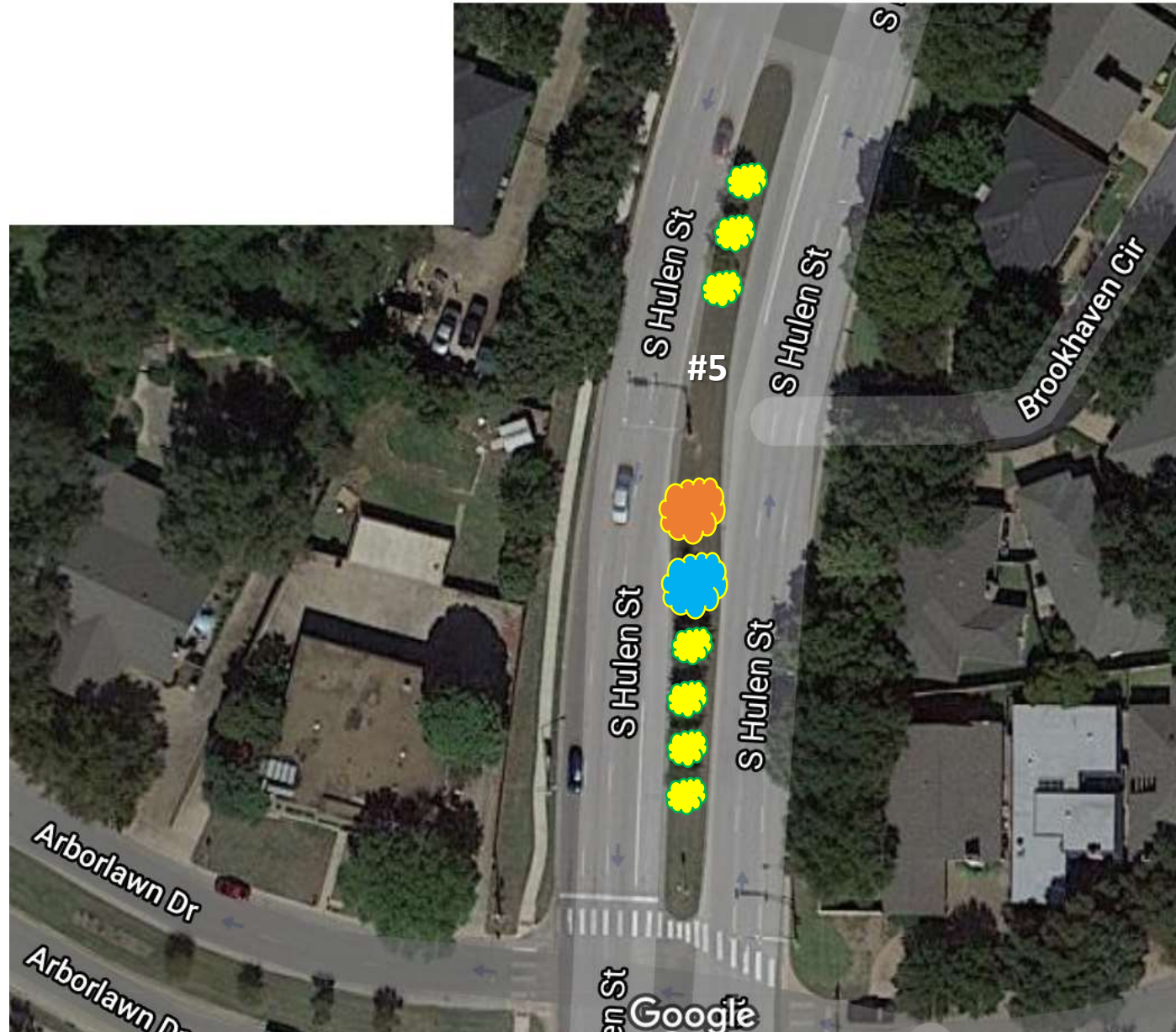


LEIT Controller 

Valve 




- 7 – Crepe Myrtles 
- 1 – Silver Oak 
- 1 – Burr Oak 



2 Valves 

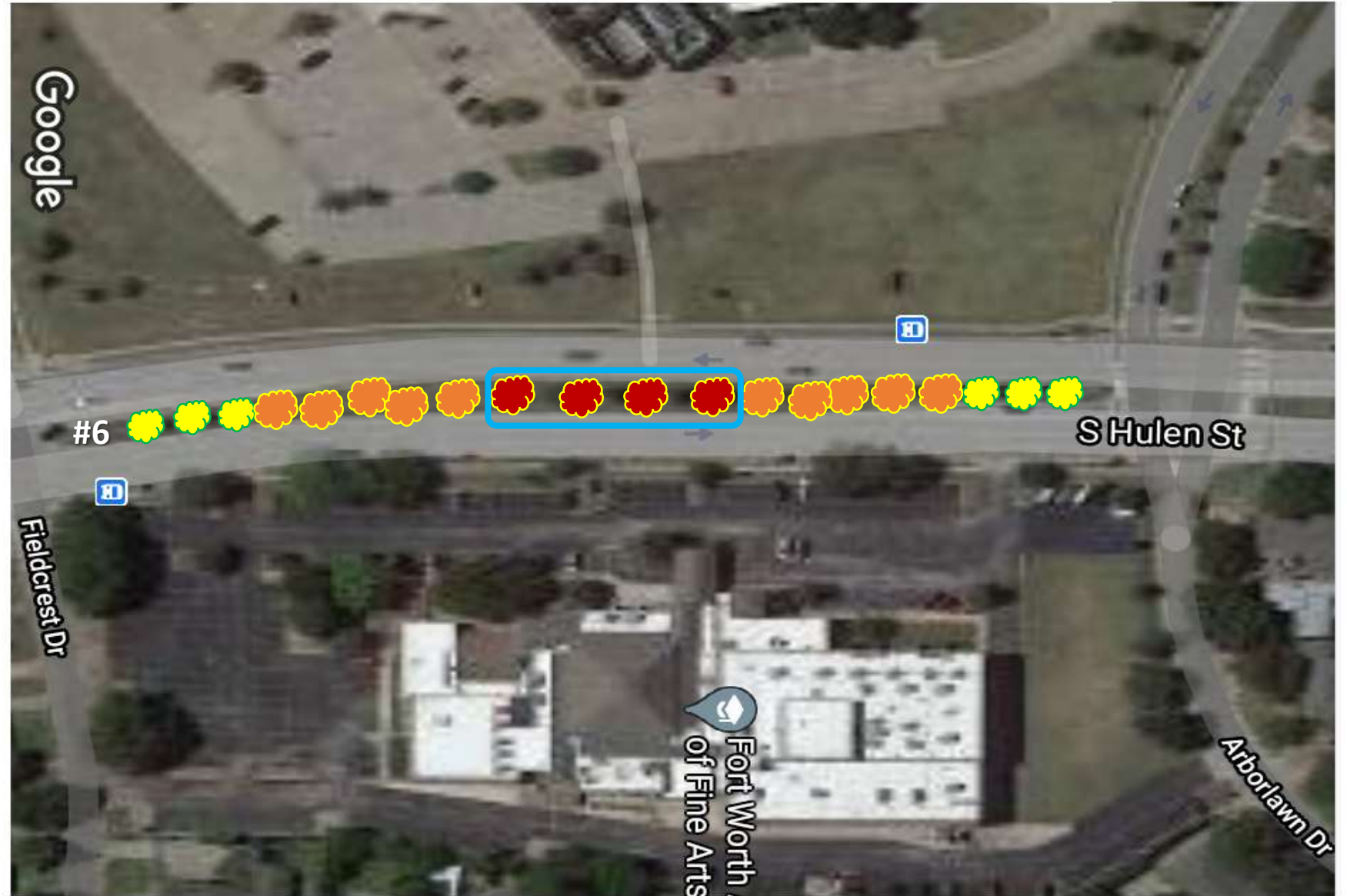


6 – Crepe Myrtles 

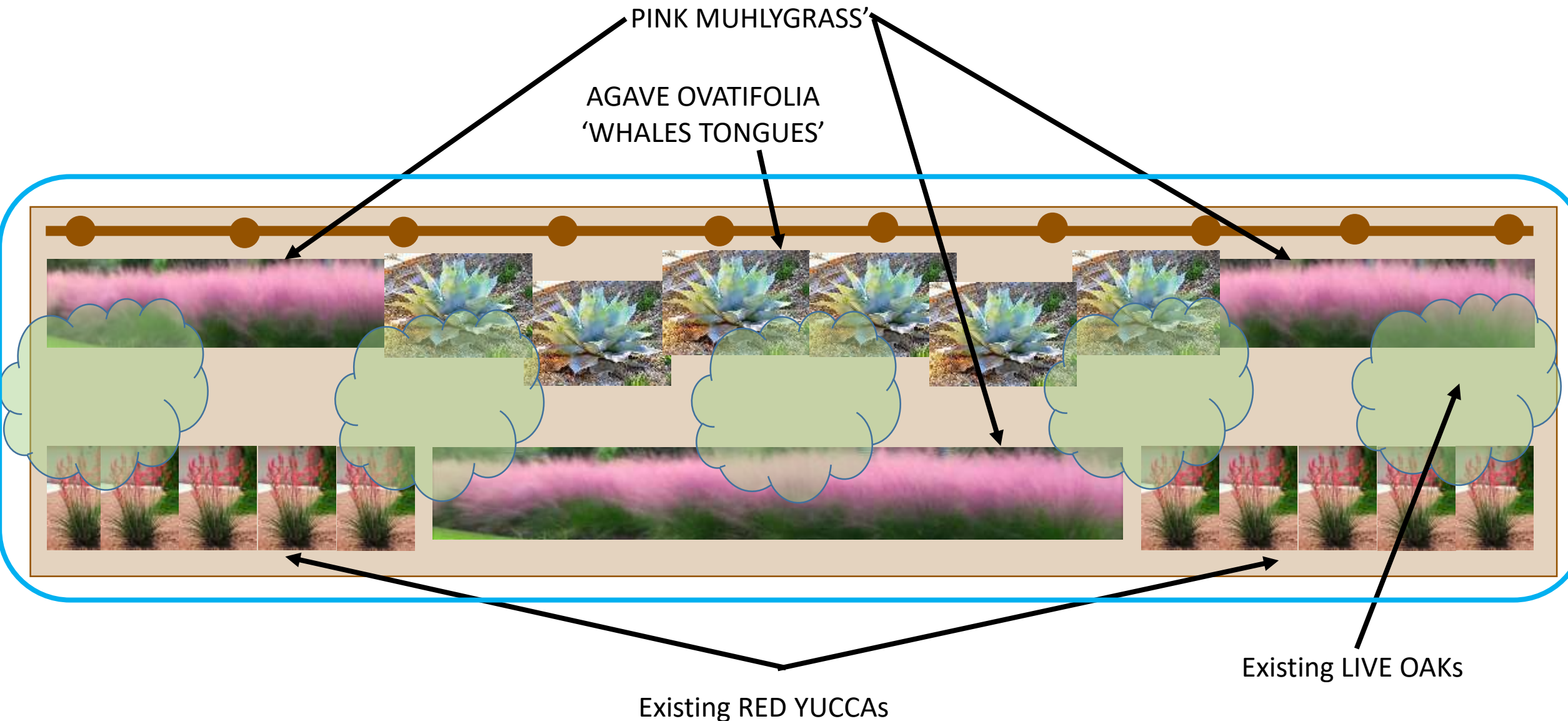
4 – Live Oaks 

10 – Burr Oaks 

Valves 



HULEN MEDIAN #6 FLOWER BED – XERISCAPE REFRESH 2020



PINK MUHLYGRASS



AGAVE OVATIFOLIA – 'WHALES TONGUE'



HULEN MEDIAN #6 – XERISCAPE REFRESH 2020

RED YUCCA

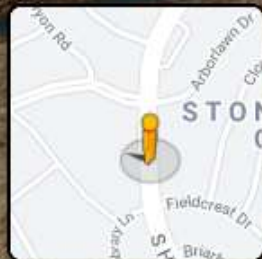


S Hulen St
Fort Worth, Texas




Street View


HULEN MEDIAN #6 – CURENTLY 2020



Google

Image capture: Feb 2019 © 2020 Google United States Terms Report a problem

5 – Crepe Myrtles 

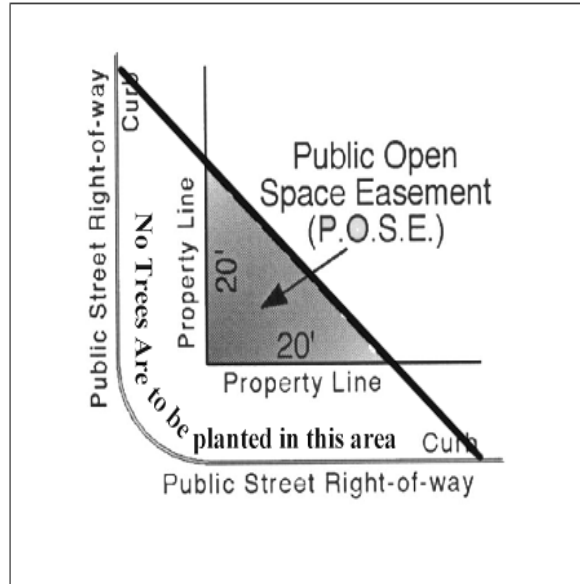
4 – Silver Oaks 



Guidelines for Landscaping in Parkway

Public Open Space Easement (P.O.S.E.)

A 20 foot by 20 foot triangular public open space easement is required on corner lots at the intersection of two streets. A 15 foot by 15 foot triangular public open space of easement is required on corner lots at the intersection of an alley and a street. In addition, at the intersection of a driveway or turnout section and a dedicated alley, a 10 foot by 10 foot triangular open space easement is to be provided on each side at the driveway or turnout at the time the driveway and/or alley is constructed.



No structure, object, or plant of any type may obstruct vision from a height of 24-inches to a height of 11 feet above the top of the curb, including, but not limited to buildings, fences, walks, signs, trees, shrubs, cars, trucks, ect., in the public open space easement as shown on the above illustration.

Landscaping in Parkway

- A tree shall be planted a minimum of 2 feet from the face of the curb, sidewalk or other structure.
- In residential areas a minimum spacing of twenty-five feet is recommended between shade trees planted on parkways and is required in commercial districts or major arterial streets.

- Minimum planting area of 3 feet must be available between back of curb and sidewalk to plant any small tree or large shrub and a minimum of 4 feet to plant large trees. A large tree shall be defined as a species that reach a height of 50 feet at maturity.
- All landscaping shall be located so that pedestrians can walk parallel to the street within the parkway whether a paved sidewalk is or is not provided.
- No tree or shrub shall obstruct the view of any traffic signal, sign, or other public sign.
- Any tree or shrub planted in the parkway is the property of the city and the city reserves the right to prune or remove such tree or shrub if it become a traffic hazard or poses risk.
- Planting trees or shrubs on any public property requires a permit from Parks and Community Services and can be obtained by calling the City Forester at 817 871 5705.